

COMMONWEALTH OF PENNSYLVANIA

DEPARTMENT OF MILITARY AND VETERANS' AFFAIRS

ANNVILLE, PENNSYLVANIA

JOSH SHAPIRO, GOVERNOR

MAJOR GENERAL MARK J. SHINDLER, THE ADJUTANT GENERAL

PROJECT NO.: 42230136

BLDG 16-153 RENOVATION

ANNVILLE, LEBANON COUNTY, PENNSYLVANIA

DESIGN PROFESSIONALS:
 OFFICE OF FACILITIES AND ENGINEERING
 BUREAU OF DESIGN AND PROJECT MANAGEMENT
 BUILDING 0-10, CHAPEL ROAD, FORT INDIANTOWN GAP
 ANNVILLE, LEBANON COUNTY, PENNSYLVANIA

INDEX TO DRAWINGS

- G.1.1 COVER SHEET
- G.1.2 PROJECT INFORMATION

GENERAL CONSTRUCTION

- CIVIL DWGS.
- C.1.0 SITE PLAN
- C.2.0 FENCE DETAILS
- C.3.0 SITE NOTES AND DETAILS

ARCHITECTURAL DWGS.

- A.1.0 DEMOLITION PLAN
- A.1.1 FLOOR PLAN
- A.1.2 DIMENSIONED FLOOR PLAN
- A.1.3 REFLECTED CEILING PLAN
- A.1.4 ATTIC DECKING PLAN
- A.2.1 EXTERIOR ELEVATIONS
- A.3.1 ROOF PLAN & DETAILS
- A.4.1 ENLARGED PLAN & ELEVS.
- A.4.2 BUILDING SECTION
- A.5.1 SCHEDULES & DETAILS

STRUCTURAL DWGS.

- S.1.1 PLANS, SECTIONS & DETAILS

HVAC CONSTRUCTION

- HVAC DWGS.
- H.1.0 HVAC DEMOLITION PLAN
- H.1.1 HVAC FLOOR PLAN
- H.2.1 HVAC SECTION AND DETAILS
- H.3.1 HVAC SCHEDULES
- H.3.2 HVAC CONTROL SEQUENCES

PLUMBING CONSTRUCTION

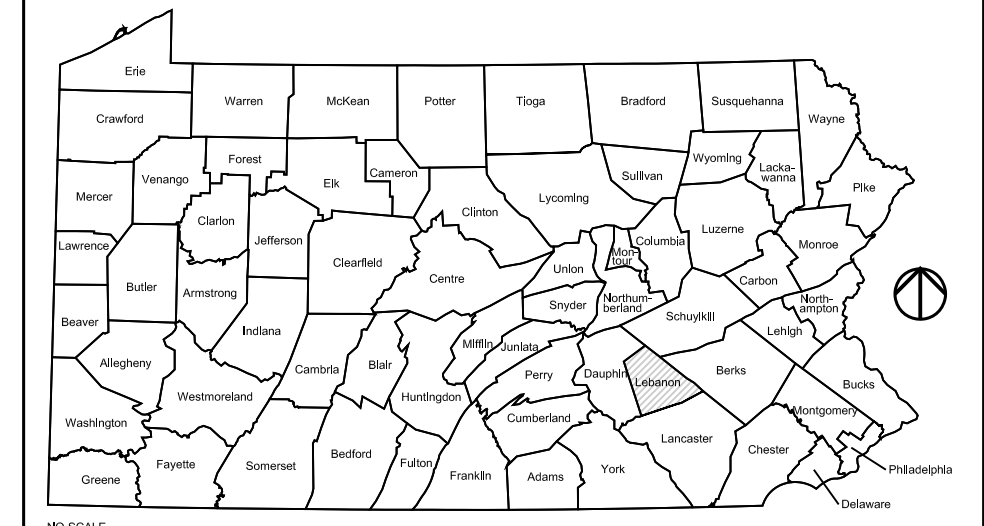
- PLUMBING DWGS.
- P.1.0 PLUMBING DEMOLITION PLAN
- P.1.1 PLUMBING FLOOR PLAN
- P.2.1 PLUMBING SCHEDULES AND DETAILS

ELECTRICAL CONSTRUCTION

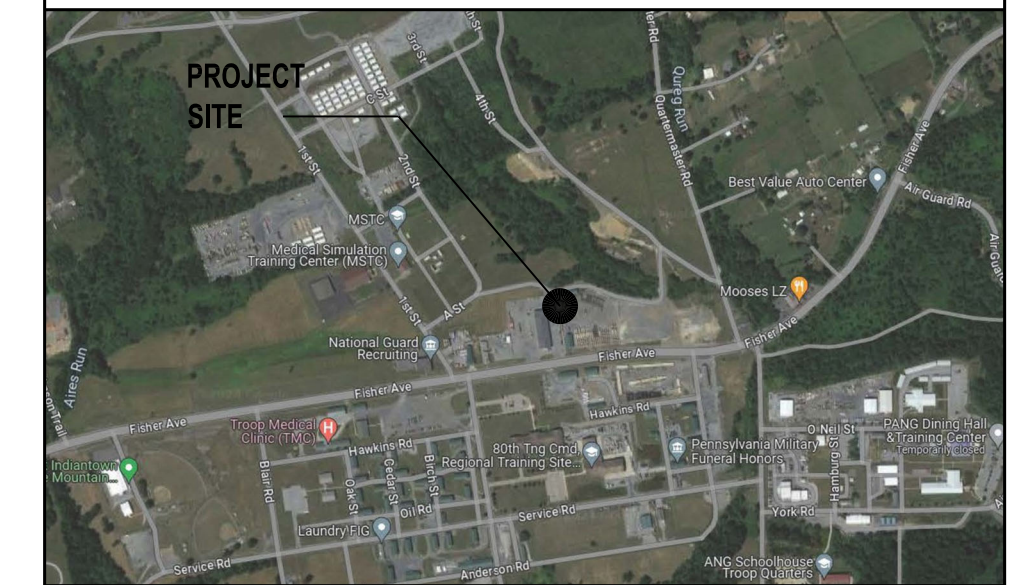
- ELECTRICAL DWGS.
- E.1.1 DEMO, LIGHTING & ATTIC
- E.1.2 POWER & SIGNAL
- E.2.1 SCHEDULES & DETAILS
- E.3.1 RISER DIAGRAM

CODE APPROVALS

PROJECT LOCATION MAP



VICINITY MAP



CAMPUS / KEY PLAN

NO.	DESCRIPTION	DATE

REVISIONS

Drawings Listed In Index:

BEA Electronic Approval _____ DATE _____

Professional's Signature _____ Date _____ Professional's Signature _____ Date _____

COMMONWEALTH OF PENNSYLVANIA
 DEPT. OF MILITARY AND VETERANS' AFFAIRS
 ANNVILLE, PENNSYLVANIA 17003

DESIGN PROFESSIONALS:
 OFFICE OF FACILITIES AND ENGINEERING
 BUREAU OF DESIGN AND PROJECT MANAGEMENT
 BLDG. 0-10, FORT INDIANTOWN GAP
 ANNVILLE, LEBANON COUNTY, PENNSYLVANIA

DMVA PROJECT NO. 42230136

BLDG 16-153 RENOVATION

FISHER AVE.
 ANNVILLE, LEBANON COUNTY, PENNSYLVANIA

COVER SHEET

DRAWN BY M. MORRIS	DATE 15 MAR 2024	DRAWING NO. G.1.1
CHECKED BY J. NYE	SCALE AS NOTED	